

What is Sustainable Tsuruga?



In Spring 2024, the Hokuriku Shinkansen will connect to Tsuruga Station. Tsuruga is a port town facing the Sea of Japan, and has long been an important gateway to continental Asia. In former times, it had a thriving port and was the first city along the Sea of Japan to build a railway, making it a cultural hub and cornerstone of transportation and commerce.

Sustainable Tsuruga creates sustainable travel experiences that promote Tsuruga's rich culture and nature, and invite people to connect with the locals and experience the unique charm of Tsuruga.

We hope that through these connections we will build a sustainable future for our town together.



TEAM CLEAN BLUE

TEAM CLEAN BLUE was formed in December 2020 by three sea-lovers united by the goal of cleaning up the sea of Tsuruga.

They organize a monthly beach cleanup, as well as upcycling workshops and many environmental education activities.



Shinkansen Limited Express Tokyo-Maibara-Tsuruga	*Scheduled to open in spring 2024 Tokyo-Kanazawa*-Tsuruga
Nearest Interchange Tsuruga Interchange	Ports of Departure Tomakomai East, Otaru, Akita, Niigata
Komatsu Airport	From Komatsu Airport to Tsuruga use the limousine bus And JR limited express train.

TEAM CLEAN BLUE

【Official LINE】



【Nagobi Youtube】



See what's new and watch daily activities.

Workshop Reservations



Sustainable Tsuruga



(+81)770-24-4500

FAX (+81)770-24-4333

► Map Travel Co., Ltd.

Instagram: @sustainable_tsuruga
www.sustainable-tsuruga.jp
(Official site scheduled to open in 2023)



HP

Instagram

Cooperated by **Tsuruga Tourism Association**
Aquatom Ground Floor, 2-2-4 Kagura-cho,
Tsuruga-City, Fukui-Pref. 914-0063
TEL (+81)770-22-8167
FAX (+81)770-22-8197

サステナ ツルガ が

サステナ
ツルガ
NO. 3
ENGLISH



Trip NO. 3

Beach Cleaning & Upcycling Workshop

SUSTAINABLE
TRAVEL EXPERIENCES
IN TSURUGA



▶ Garbage patches formed by ocean currents



World Marine Debris

Marine debris, also known as marine litter, is human-created waste that has deliberately or accidentally been released in a sea or ocean. It is said that the garbage generated in our cities accounts for 80% of marine litter, and that the total amount of marine litter floating in the world's oceans has reached approximately 150 million tons.

Ocean's Plastic Problem

Will there be more garbage than fish by 2050?!

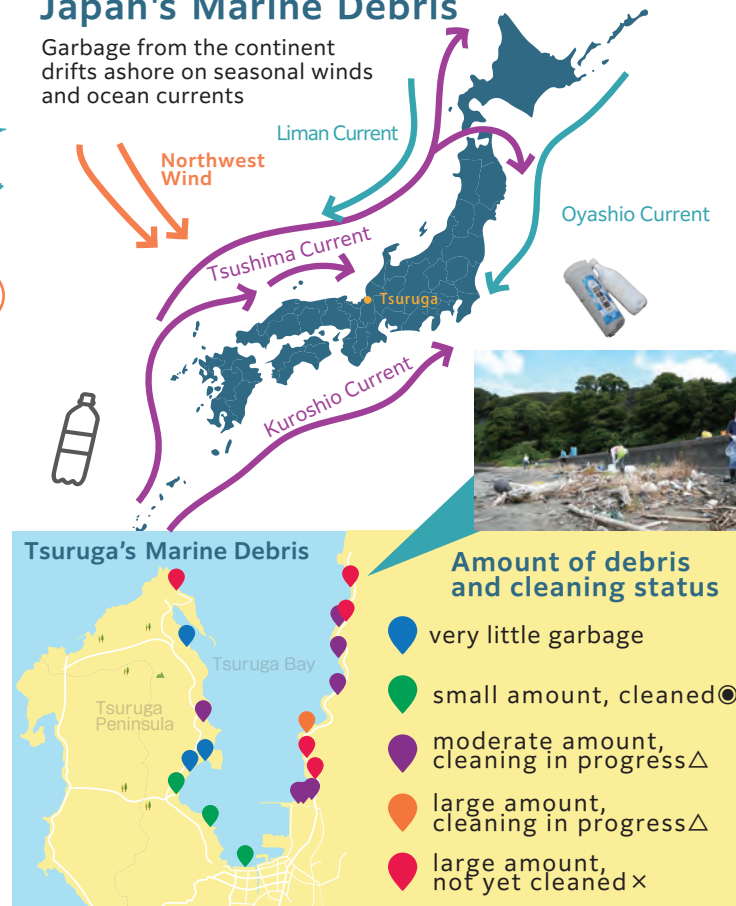
Debris made of artificial materials such as plastic are difficult to decompose, and can take tens to hundreds of years to return to nature.

Drifting garbage has become a serious global problem that damages marine life and affects ecosystems. There is also concern that the discharged garbage will eventually turn into microplastics and return to our bodies through the food chain.



Japan's Marine Debris

Garbage from the continent drifts ashore on seasonal winds and ocean currents



Here are some simple steps we can take today

- Bring your own water bottle
- Do not buy over-packaged products
- Use an eco-bag
- Use things carefully for a long time
- Use stores that sell by weight
- Participate in beach cleanups

★ Let's be conscious of how to reduce garbage in our daily lives!



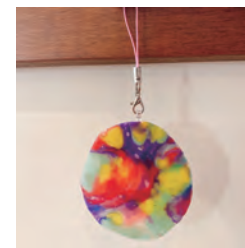
Beach Cleaning Experience



Beach cleaning workshops are held along all the coasts in Tsuruga city. We also provide equipment such as work gloves. Please wear clothes that are easy to move in.

- required time: about 1 hour
- cancelled in bad weather

Upcycling Workshop



In this upcycling workshop we will reuse the plastic garbage that we collect to make small items such as key holders and accessories. Let's have fun while cleaning up the planet!

- required time: about 1 hour

Recommended Point

I think that by seeing the actual state of garbage with your own eyes and picking it up with your own hands makes us feel more connected to the earth. Let's have fun and listen to the voice of the earth together.

